

## Installing the Unit

### Guidance Screen

Mount to the windscreen using suction mount and ram arm, or unscrew the ball from the suction mount and use this for a permanent fixture.



Touch Screen



Power On/Off

### Magnetic Antenna

Install centrally across the width of the roof (if the roof is not metal use the roof mount plate supplied).



12v DC Plug

Plug into 3 pin socket on vehicle.

**Warranty Void if suction mount fails !!** - Its is advised that the suction mount is removed from the windscreen when the unit is not in operation and reat-tached on a day to day basis.

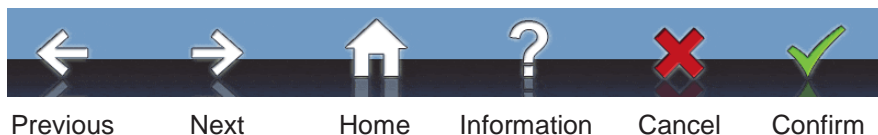
For a more permanent fixing please detach the ram ball from the suction mount and secure down in the vehicle.

**Warning** – Please disconnect the unit from the power supply, if you need to jump start your vehicle.

# Setup

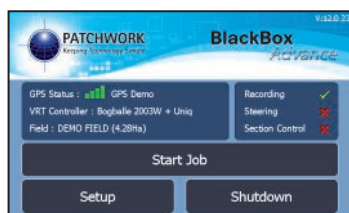
When launching the BlackBox for the first time the 'Setup Wizard' will run through the essential settings ready for guidance and area measurement.

## Navigation Bar



**N.B.** The wizard can be re-accessed via **Setup > Save/Load Profile > Run Initial Setup Wizard**.

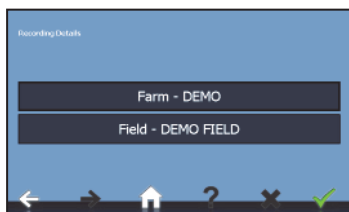
## Starting a Job



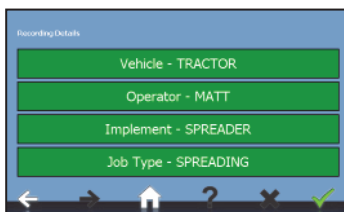
1) Press **Start Job**



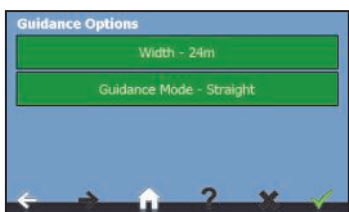
2) Select **New Job**. If Recording = NO the unit will go to step 5.



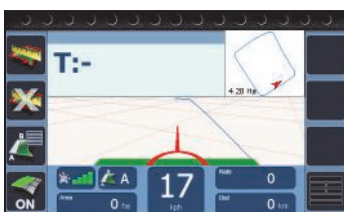
3) Enter **Farm/Field** and **Confirm**



4) Check/edit recording details and **Confirm**



5) Enter the working **Width**, select the **Guidance Mode** and press **Confirm**.



6) Guidance screen opens ready to begin job.

## Guidance Screen



*\* Only available  
when using  
section control*

### Information Panel



## Measuring the Area of a Field

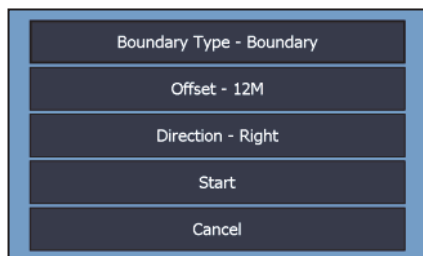
1) After starting a new job, position your vehicle at the edge of the field and press the **Start/Pause Boundary**.

2) Change the settings as required:-

**Boundary Type** – set to Boundary.

**Offset** – the distance that the antenna is from the field edge.

**Direction** – Where the edge of the field is when you are facing forward.



3) Press **Start** and drive around the field edge until the start point is reached. The BlackBox will automatically close and save the boundary map, displaying the field shape and area size in the mini map. If the boundary doesn't close, press the **Close Boundary** button.

**N.B.** During the boundary run the boundary recording can be paused and restarted using the **Start/Pause Boundary** button, if there is a need to drive around obstacles.

To do a new boundary map redo steps 1) to 3).

## Setting and Using a Guidance Line

**N.B.** The green coverage recording can be turned off and on using the 'Recording On/Off' button or selected method.

1) Position the vehicle in the field where the job will begin. (When using a curved line it is important to use the longer edge of the field to set a guide line).

2) At the beginning of a straight run press the **Grid area** to set point A.



**Grid area**

3) Drive to the end of the run and press the **Grid area** to set B. The guidance line will appear ready for guidance.

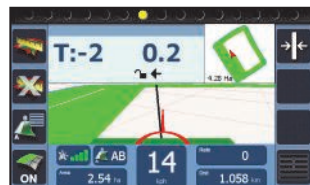


**Grid area**

4) If working the headland pass, continue around then line up to the set AB line and use the guidance to work the inner areas of the field.



5) When turning in the headland the next AB line will appear.



Pressing the **Grid area** a third time allows the guidance line to be reset and also if using the 'Straight' guidance mode, recalibrated to align with current location.

## Finishing a Job

To complete a field boundary map or guidance job to start a new one, press the **Menu** button and then **Next Job** to do a different job with the same settings or **Finished Job** to return to the Start menu.

To power off the BlackBox press **Shutdown**, then press **Yes** and disconnect from power supply.